



SHAHEED BISHAN SINGH MEMORIAL SR. SEC. SCHOOL

F-213 A, Mansarovar Garden, New Delhi, Delhi 110015

Fully air-conditioned smart school

Phone:9625869243,011-41421862 Email ID- contactus@sbsmschool.com

website: www.sbsmschool.com; school ID-1516119, Affiliation no- UCU0037

HOLIDAY HOMEWORK (2026-27)

CLASS –XI

Dear Parents,

An exciting time is here once again — it's summer vacation, filled with fun, learning, and new experiences. Keeping this in mind, SBSM School has planned a variety of interesting activities to keep the children positively engaged and their energies well directed. We request parents to kindly guide, encourage, and motivate their wards while also allowing them to work independently and creatively. Your support and cooperation will help make this holiday both enjoyable and productive for the children.

Instructions for Parents/students:-

- Eat healthy food and drink plenty of water, take good care of your health.
- Develop English speaking habit during vacation.
- Revise and learn all your lessons completed till date.
- Complete your pending class work, homework and correction work.
- Learn to present some act, speech or poem etc. for assembly.
- Encourage your child to read 3-4 pages from a book or newspaper daily to develop a reading habit.

Kindly go through the following important instructions regarding the Holiday Homework:

- All the worksheets given in the Holiday Homework are to be completed in **fair notebooks/files as stated in the homework instructions.**
- All Holiday Homework notebooks and files will be collected on **6th July 2026.**
- Summer Holidays will be from **30th May 2026 to 5th July 2026.**
- Each subject Holiday Homework will be awarded marks in Practicals; therefore, students are advised to complete all work neatly and sincerely.
- A separate Civic Sense Homework has also been given, which is to be done on A4 size sheets.
- A PPT is to be prepared on Microsoft PowerPoint.

Kindly ensure timely completion of all assigned work.

Wishing all our students a happy, safe, and productive summer vacation!

CIVIC SENSE ACTIVITY

CLASS XI AND XII

Civic sense is an important part of being a responsible citizen. It teaches us to respect public property, follow rules, maintain cleanliness, help others, and behave responsibly in society. Good civic sense helps in creating a clean, safe, disciplined, and peaceful environment for everyone. Small habits like using dustbins, following traffic rules, saving water, and respecting others can bring a positive change in society and make our country a better place to live.

1. Gratitude Activity

Topic: “Expressing Gratitude Towards Helpers Around Us”

Objective: To develop respect, kindness, and appreciation for people who contribute to our daily lives.

Activity Instructions

- Students will express gratitude towards any three people such as parents, grandparents, domestic helpers, drivers, security guards, teachers, or sanitation workers.
- Thank them personally through words, a small note, or helping them in their work.
- Click photographs/selfies while performing the activity.

Reflection Questions

- How gratitude improves society
- Importance of respecting every individual
- What you learned from this activity

Creative Component

Students may prepare a short reel/video on gratitude

OR

a PowerPoint Presentation with photographs and captions.

2. Road Safety & Helmet Awareness Activity

Topic: “Helmet On, Safety On”

Objective: To create awareness about road safety and responsible citizenship.

Activity Instructions

- Click photographs wearing a helmet properly.
- Create awareness among family members/friends about road safety rules.
- Observe traffic behaviour in your locality and note how many riders wear helmets and common traffic rule violations.

Reflection Questions

- Why is wearing a helmet important?
- How does following traffic rules show civic sense?
- What can students do to spread road safety awareness?

Creative Component

Students may prepare a short awareness reel/video OR a PPT with slogans, photographs, and road safety messages.

3. Helping at Home Activity

Topic: "Helping at Home: A Responsible Citizen's Duty"

Objective: To encourage students to develop responsibility, empathy, discipline, and respect towards family members through active participation in household work.

Activity Instructions

- Students will assist their parents/guardians in household work for at least 5 days during the holidays.
- Examples of activities include cutting vegetables, arranging kitchen items, serving food, preparing simple dishes, cleaning the dining area, dusting household furniture, putting washed clothes in sunlight for drying, watering plants, and organising books or cupboards.
- Click photographs/selfies while helping at home.

Reflection Questions

- What you learned from helping at home
- Importance of sharing responsibilities
- How helping family members reflects good civic sense

Creative Component

Students may prepare a short reel/video showing their participation

OR

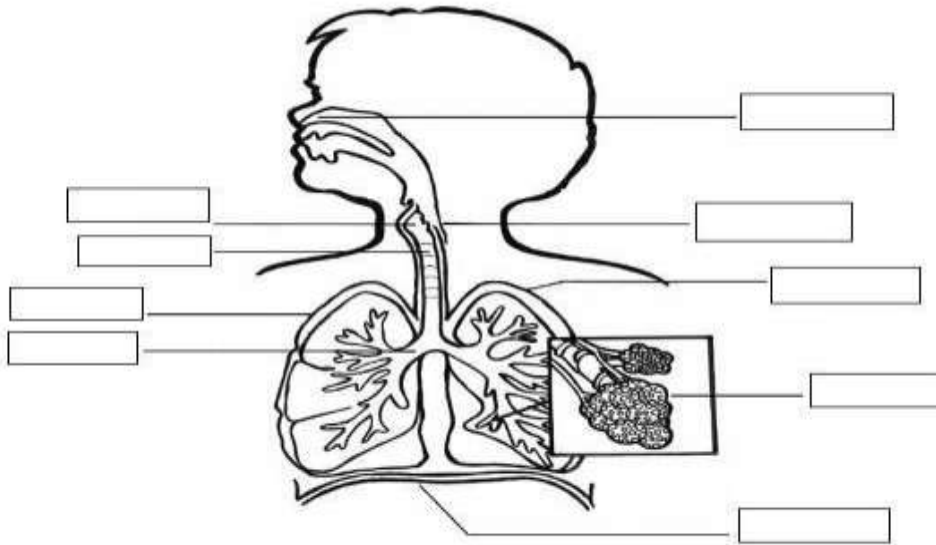
a PowerPoint Presentation with photographs and captions related to the activity.

Note: Civic Sense Activities can be performed in groups. The PPT/Reels prepared for the activity must be shared with the Class Teacher along with a properly mentioned list of students participating in the activity. Kindly note that at least two out of the three given activities are mandatory for each child to perform.

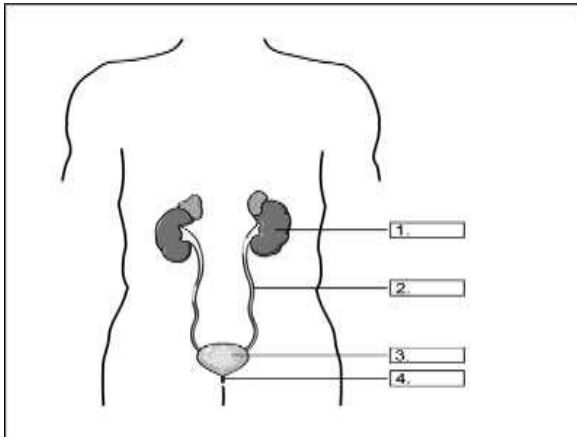
HOLIDAY HOMEWORK 2026-27

CLASS- XI BIOLOGY (044)

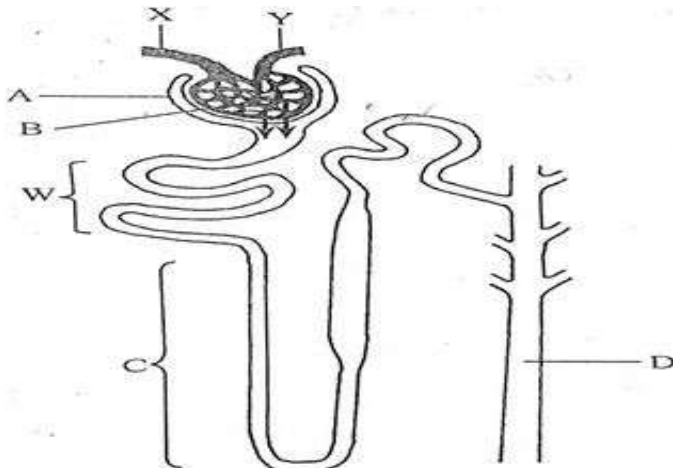
Q1- Label the given parts of respiratory system and write the function of all the parts.



Q2- Label the parts of urinary system along with their functions.



Q3- Identify the given structure and answer the following:



- a) Label A, B, C, D, W, X and Y.
- b) Differentiate between X and Y.
- c) Where do you find such structures in human body?
- d) Name the blood vessel that brings nitrogenous wastes to the kidneys for removal.
- e) Name the blood vessel that is taking blood away from the kidney after the removal of nitrogenous waste.
- f) Mention the function of part B and D.

Q4- What physiological circumstances lead to *erythroblastosis foetalis*.

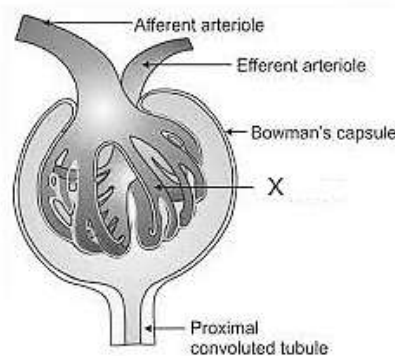
Q-5 Match the terms of column-I with that of Column-II:

Column-I	Column-II
Lymphatic system	Immune response
Immunoglobulin	Coagulation of blood
Thrombocytes	Relaxation
Diastole	To drain back the tissue fluid

Q5- Define the following pulmonary volumes and respiratory capacities:

- a) Residual Volume b) Inspiratory reserve volume c) Total Lung Capacity d) FRC

Q-6 Observe the given figure and answer the following.



- a) Label 'X' in the given figure.
 b) Mention the significance of given structure in the process of urine formation.

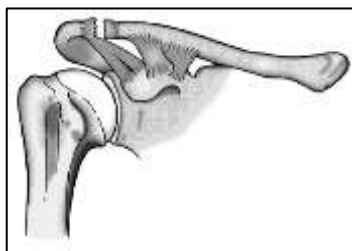
Q7- a) What is the function of carbonic anhydrase?

b) Why does exchange of respiratory gases continue to occur in the lungs even if you hold the breath for 30 seconds?

c) Describe the process of gaseous exchange between alveoli of lungs and blood in respect of partial pressure of respiratory gases.

Q8- Explain the following ways of kidney function regulation in humans.

- a) JGA mechanism
 b) By hypothalamus



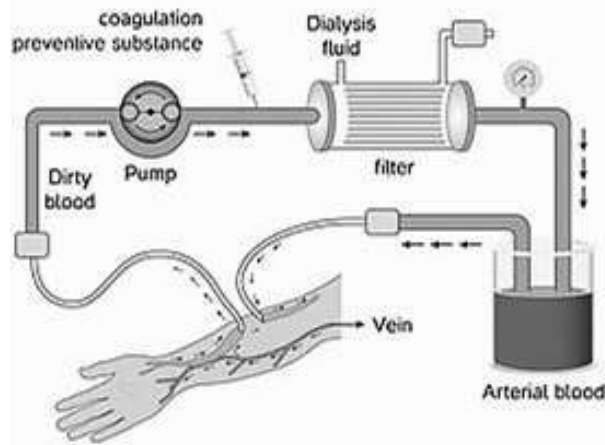
Q-9 Observe the given figure shown and answer the following

- a) Identify the type of joints in a given figures.
 b) Mention any one location in human body where do you find such joints.
 c) What are fibrous joints? Give one example.

Q10- All the conducting fibres in human heart are very special type of muscle fibres. If anything goes wrong with the conducting nodal system, either because of degeneration or obstruction of any mechanical kind, the sinus rhythm alters and this also alters the heart beat. This condition is also termed as heart stroke. Now a days by surgery a small transistorised pacemaker can be fixed in the body of the patients. The artificial pacemaker before fixing is synchronised with SA-node.

- Sino-atrial node is called the pacemaker of our heart. Why?
- Why do we call our heart myogenic?
- Write the pathway for propagation of cardiac impulse through nodal system.
- What is the significance of atrio-ventricular node and AV bundle in the functioning of heart?

Q11- Observe the given figure and answer the following.

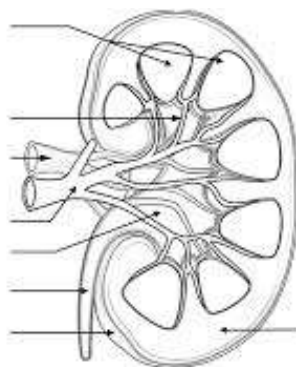


- Name the procedure shown in given figure. What is the function of dialysis fluid in this procedure?
- What is the significance of this procedure?
- Mention any two disorders of the urinary system

Q 12- Write a brief note on the following:

- Rh- incompatibility
- ABO blood grouping
- Inhalation and exhalation
- Counter current system

Q13- Explain and label all the parts of kidney shown in the given figure:

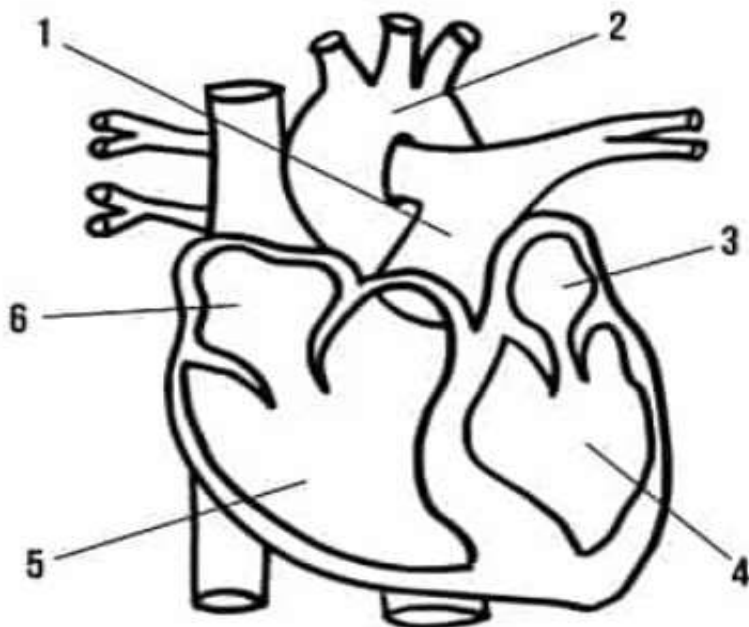


Q14-Differentiate between:

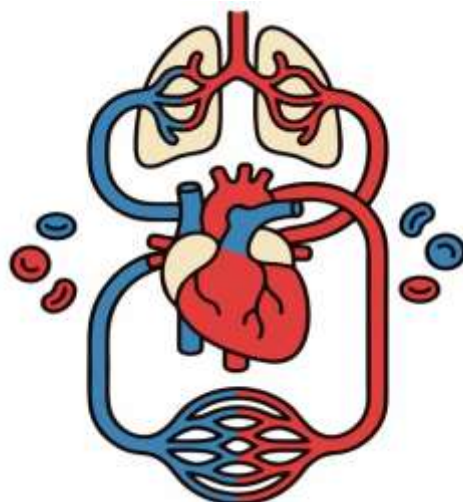
- a) Open and closed circulatory system
- b) Lymph and blood
- c) Single and double circulation
- d) Arteries and veins

Q15- Classify organisms on the basis of excretory products.

Q16- Label the given parts of human heart and explain nodal system of heart.



Q17- What is double circulation? Explain different types of circulation according to given figure:



Q18- Explain any two disorders of respiratory system.

Q19- Why human heart is known as auto excitable? Graphically represent the standard ECG of healthy adult human.

Q20- Calculate the tidal volume of a healthy adult for five hours.

CHEMISTRY(043)

CLASS XI

❖ UNIT TEST 1 SYLLABUS: Ch.1 and Ch.2 (upto Bohr's Postulates)

WORKSHEET 1- BASIC CONCEPTS OF CHEMISTRY

Part A-MCQ

Q1. The number of significant figures in 0.00450 is:

- (a) 2 (b) 3 (c) 4 (d) 5

Q2. One mole of oxygen molecules contains:

- (a) 6.022×10^{22} molecules (b) 6.022×10^{23} molecules
(c) 3.011×10^{23} molecules (d) 2.014×10^{23} molecules

Q3. The molar mass of H_2SO_4 is –

- (a) 49 g mol^{-1} (b) 98 g mol^{-1} (c) 96 g mol^{-1} (d) 18 g mol^{-1}

Q5. Which law is represented by the equation given : $m_1 + m_2 = m_3$

- (a) Law of constant proportions (b) Avogadro law
(c) Law of conservation of mass (d) Gay Lussac law

Q6. Empirical formula of benzene C_6H_6 is:

- (a) CH (b) CH_2 (c) C_2H_2 (d) C_6H_6

Q7. The mass percent of oxygen in water is:

- (a) 11.1% (b) 88.9% (c) 50% (d) 16%

Q8. The formula mass of NaCl is:

- (a) 23 u (b) 35.5 u (c) 58.5 u (d) 46 u

Q9. Which of the following has maximum number of atoms?

- (a) 1 mole of He (b) 1 mole of H_2O (c) 1 mole of H_2 (d) 1 mole of Na

Q10. Limiting reagent is the reactant which:

- (a) is present in excess (b) gets completely consumed first
(c) has maximum molar mass (d) forms minimum product

Assertion–Reason Questions Directions: Choose the correct option

- (a) Both Assertion (A) and Reason (R) are true and R is the correct explanation of A.
(b) Both A and R are true but R is not the correct explanation of A.
(c) A is true but R is false.
(d) A is false but R is true.

Assertion (A): Stoichiometric coefficients represent mole ratios.

Reason (R) : Chemical equations are balanced according to conservation of mass.

Assertion (A): Dalton's atomic theory could explain the law of multiple proportions.

Reason (R) : Atoms combine in simple whole-number ratios to form compounds.

Assertion (A): Percentage composition helps in determining empirical formula.

Reason (R) : Empirical formula gives actual number of atoms present in a molecule.

Assertion (A): Atomic mass unit is based on carbon-12 isotope.

Reason (R) : One atomic mass unit is defined as $\frac{1}{12}$ the mass of one carbon-12 atom.

Part B-Very Short Questions (2 Marks)

1. Define:
(a) Mole (b) Molar mass
2. Calculate the number of moles in 18 g of water.
3. State the law of definite proportions with one example.
4. Differentiate between empirical formula and molecular formula.
5. Calculate the molar mass of $CaCO_3$.
6. Find the number of molecules in 11 g of CO_2 .
7. Write any two applications of stoichiometry in chemistry.
8. Define significant figures. How many significant figures are present in 0.00560?

Part C-Short Type Questions(3 Marks)

1. Calculate the percentage composition of oxygen in H_2SO_4
2. A compound contains 40% carbon, 6.7% hydrogen and 53.3% oxygen. Determine its empirical formula.
3. Calculate the number of atoms present in 4.6 g of sodium.
4. Explain Avogadro law with a suitable example.
5. Calculate the mass of 0.5 mole of NaOH.
6. What are limiting reagents? Explain with an example.
7. Calculate the molecular mass of glucose $C_6H_{12}O_6$.
8. Differentiate between precision and accuracy with examples.

----X----X-----X

PHYSICS (042)

CLASS XI

PHYSICS

- UNIT TEST 1 SYLLABUS: Units & Dimensions, Motion in a Straight line
- WORKSHEET 1: MOTION IN A STRAIGHT LINE

1. Sahil went on his bike from Delhi to Gurgaon at a speed of 60 km/h and came back at a speed of 40 km/h. What is his average speed for the entire journey?
2. A particle is thrown upward. It reaches a height 'h' after 5 s and after 9 s comes back to the same point as it was at 5 s. What is the speed of the particle at height 'h'?
3. A car moves a distance of 200 km. It covers the first half of the distance at a speed of 40km/h and the second half of the distance at speed v. If the average speed is 48km/h, then find the value of v.
4. Draw the nature of a position –time graph for a motion of a particle moving with [i] positive acceleration [ii] zero acceleration [iii] negative uniform velocity.
5. A train takes 1 hr. to go from one station to another. It travels at a speed of 30km/h for first half hour and at a speed of 50km/h for the next half hour. Find the average speed of the train.
6. If a body travels 1/3 distance with a velocity of 2m/s next 1/3 distance with a velocity of 4m/s and the remaining 1/3 distance with a velocity of 6m/s. Find the average velocity of the body?
7. From the top of a tower 30m high, a stone is dropped. At the same instant, another stone is projected vertically upwards from the ground with a speed of 30m/s. After how much time and at what height from the ground will the stones cross each other. Take $g = 10 \text{ m/s}^2$
8. A ball thrown vertically upwards with a speed of 20m/s from the top of a tower and returns to the ground level in 6 s. Find the height of the tower. Take $g = 10 \text{ m/s}^2$
9. A stone is dropped from a balloon moving upwards with a velocity of 4.5m/s. The stone reaches the ground in 5s. Calculate the height of the balloon when the stone was dropped [$g = 9.8\text{m/s}^2$]
10. In a circus, a motorcyclist takes 4 rounds on the same track in the globe of radius r with a velocity $5r$. Find (i) total displacement (ii) total distance covered (iii) total time taken by him.
11. If displacement of a particle is given by $x = t^2 + 5t + 3$. Find (i) Velocity of the particle at $t = 3\text{s}$ and (ii) Average velocity of the particle between $t = 1\text{s}$ to $t = 3\text{s}$.

COMPUTER SCIENCE (083)

CLASS XI

- ❖ **UNIT TEST 1 SYLLABUS:**
Algorithm and Flow chart .

Holidays Home Work

Kindly note that the following questions need to be created in MS Word by using PSEUDOCODE and sent to me at mahalrinky@gmail.com

1. Write a program to enter student name, class, section, and admission number. Display the details in proper format.

2. Write a program to input length and breadth of a rectangle and calculate:

- Area
- Perimeter

Use suitable arithmetic operators.

3. A customer buys 3 items. Input the price of each item and calculate:

- Total bill amount
- Average price of items

4. Write a program to convert temperature from Celsius to Fahrenheit using the formula:
 $F = 5/9 * C + 32$

5. Write a Python program to calculate Simple Interest by taking Principal, Rate, and Time as input.

6. Input marks of 5 subjects and calculate:

- Total marks
- Percentage

7. Write a program to convert Indian Rupees into US Dollars.

Assume:

1 Dollar = 83 Rupees.

8. Input distance in kilometres and convert it into meters and centimetres.

10. Calculate Employee Salary Slip

Input:

- Employee name
- Basic salary

Calculate:

- HRA = 10% of salary
- DA = 5% of salary
- Total Salary

- 11.** Write a program to calculate the area and circumference of a circle.
- 12.** Write a program to swap two numbers using a third variable.
- 13.** Input total minutes and convert them into hours and remaining minutes.
- 14.** Input number of units consumed and calculate total bill amount if cost per unit is ₹6.
- 15.** Write a program to calculate BMI
- 16.** Cricket Score Analysis
Input runs scored in 5 matches and calculate:
 - Total runs
 - Average runs
- 17.** Input book price and calculate final amount after 10% discount.
- 18.** Write a program to calculate volume of cuboid using length, breadth, and height.
- 19.** Digital Clock Conversion
Input total seconds and convert them into minutes and seconds.
- 20.** Travel Expense Calculator
Input:
 - Distance travelled
 - Fuel efficiency (km/litre)
 - Petrol price per litreCalculate total fuel cost of the trip.

CLASS XI

MATHEMATICS (041)

General Instructions:

- Maintain a separate, neat assignment register exclusively for Mathematics holiday homework.
- All questions are compulsory. Solve sequentially, showing clear logical steps and neat sketches wherever necessary.
- NCERT reference questions must be solved completely without skipping intermediate calculations.

SECTION A: COMPLEX NUMBERS AND QUADRATIC EQUATIONS

Part 1: Core Concept Mastery (NCERT & Exemplar Based)

Q1. Evaluate the following powers of i :

(i) i^{135} (ii) i^{999} (iii) $i^n + i^{(n+1)} + i^{(n+2)} + i^{(n+3)}$, where $n \in \mathbb{N}$.

Q2. Find the real values of x and y if:

$$(1 + i)y^2 + (6 + i) = (2 + i)x$$

Q3. Express the given complex number in the standard form $a + ib$:

$$z = \left[\frac{1}{1 - 4i} - \frac{2}{1 + i} \right] / \left[\frac{3 - 4i}{5 + i} \right]$$

Q4. Find the multiplicative inverse of the complex number $z = \sqrt{5} + 3i$.

Q5. If $x + iy = \sqrt{\frac{(a + ib)(c + id)}{(a^2 + b^2)(c^2 + d^2)}}$, prove dynamically that $(x^2 + y^2)^2 = \frac{a^2 + b^2}{c^2 + d^2}$.

Q6. Convert the complex number $z = -1 - i\sqrt{3}$ into polar form. Also, represent it visually on an Argand plane sketch in your notebook.

Q7. If α and β are different complex numbers with $|\beta| = 1$, then find the exact value of $\left| \frac{\beta - \alpha}{1 - \alpha\beta} \right|$.

Q8. Find the number of non-zero integral solutions of the equation $|1 - i|^x = 2^x$.

Part 2: Case Study Based Problem

Case Study 1: Alternating Current (AC) Circuit Design

In electrical engineering, alternating current (AC) circuit analysis cannot be done easily using real numbers because voltage and current alternate directions continuously. Instead, electrical engineers represent impedance using complex numbers.

Suppose a complex industrial circuit has two components connected in parallel. Their individual impedances are:

$$Z_1 = 3 + 4j \text{ and } Z_2 = 1 - 2j$$

The total equivalent impedance Z_p of the circuit satisfies:

$$1/Z_p = (1/Z_1) + (1/Z_2)$$

1. Express the individual impedance reciprocal $1/Z_1$ in standard complex form $a + jb$.
2. Determine the value of $1/Z_p$ by adding the individual reciprocals.
3. Calculate the actual total circuit impedance Z_p in standard form $a + jb$.
4. Find the modulus $|Z_p|$, which represents the net effective magnitude of impedance.

SECTION B: TRIGONOMETRIC FUNCTIONS

Part 1: Core Concept Mastery (NCERT & Higher Order Thinking)

Q9. Convert the following measures:

(i) Find the radian measure corresponding to $-47^\circ 30'$.

(ii) Find the degree measure corresponding to $(11/16)$ radians. (Use $\pi = 22/7$)

Q10. A wheel makes 360 revolutions in one minute. Through how many radians does it turn in one second?

Q11. If $\cos x = -1/3$ and x lies in the third quadrant, find the absolute values of the remaining five trigonometric functions.

Q12. Prove the following trigonometric identity rigorously:

$$(\cot x \cos x) / (\cot x + \cos x) = (\cot x - \cos x) / (\cot x \cos x)$$

Q13. Find the exact value of:

$$\sin(75^\circ) \cdot \cos(15^\circ) + \cos(75^\circ) \cdot \sin(15^\circ)$$

Q14. Prove that:

$$\cos 2x \cdot \cos(x/2) - \cos 3x \cdot \cos(9x/2) = \sin 5x \cdot \sin(5x/2)$$

Q15. Show that:

$$\tan 4x = (4 \tan x (1 - \tan^2 x)) / (1 - 6 \tan^2 x + \tan^4 x)$$

Q16. Find the general solution for the trigonometric equation:

$$\sin 2x - \sin 4x + \sin 6x = 0$$

Part 2: Case Study Based Problem

Case Study 2: Harmonic Tidal Waves Behavior

The water level at an ocean port rises and falls due to gravitational tidal waves. Engineers model the depth of water d (in meters) relative to time t (hours past midnight) using a periodic trigonometric function:

$$d(t) = 5 \cos(\pi t / 6) + 12$$

1. Find the maximum and minimum depths of the water at this port.
2. What is the exact water depth at midnight ($t = 0$)?
3. Find the first two positive values of time t (in hours) when the water depth is exactly 14.5 meters.
4. Determine the period of this tidal function, and explain what it signifies physically.

BUSINESS STUDIES (054)

CLASS XI

❖ UNIT TEST 1 SYLLABUS: EVOLUTION & FUNDAMENTALS OF BUSINESS, : FORMS OF BUSINESS ORGANISATION

❖ WORKSHEET 1- EVOLUTION & FUNDAMENTALS OF BUSINESS

- Q1. Name the type of human activity in which a teacher is teaching his son at home.
- Q2. Name the economic activity in which transfer of interest is possible.
- Q3. A person repairs motorcycles on roadside. How will you describe this activity?
- Q4. Aarushi cooks food at home for her family but Kshitij cooks food and sells it to others in a restaurant. Who is engaged in business activity?
- Q5. Pranshu produces goods not for the purpose of sale but for personal consumption. Will it be a business activity? Why?
- Q6. Name the professional body whose guidelines or code of conduct are to be followed by lawyers.
- Q7. Devesh is planning to set up a factory for manufacturing readymade garments. List any two risks that he might face.
- Q8. Dr. Dinesh runs a clinic. Mr. Aryan is running a bakery. Identify the types of economic activities performed by both of them and state any three differences between them.
- Q9. Organic Tea Ltd. is a Singapore based company dealing in import of tea from India and re-exporting it to many South East Asian countries. It has a huge godown near the sea-port where it has made scientific arrangements for storing tea till it is reexported.
- (a) Name the type of trade in the above case.
- (b) Name the aids to trade being utilised by Organic Tea Ltd. and which utility does it create?

❖ WORKSHEET 2- FORMS OF BUSINESS ORGANISATION

- Q1. Teachers of different schools in West Delhi form a society to purchase land and construct flats for its members. Identify this form of business organisation.
- Q2. All the members of a company sitting in a general meeting were killed by a bomb. Was the company wound up?
- Q3. Gurpreet and Shenoy established a Joint stock company to manufacture and sell toys. Identify this form of business organisation.
- Q4. Employees Union of Bharat Textiles start a retail store to make daily household articles at reasonable prices available to its members. Name this form of business organisation.
- Q5. Mr. Ganesh wants to apply for the shares of ACC Ltd. From which document he will get the details?
- Q6. Sukhdev and Gopi started a partnership business. Gopi is a singer. He has no time to involve in business activity. Sukhdev conduct the business on behalf of Gopi. Can you identify and explain two types of partners?
- Q7. Yash and Rishabh are partners in a partnership business. In order to avoid future disputes, they decided to form a written agreement.

- (a) Name the written agreement.**
 - (b) Give the contents of that agreement.**
-

ACCOUNTANCY (055)

CLASS XI

❖ UNIT TEST 1 SYLLABUS: INTRODUCTION TO ACCOUNTING , : BASIC ACCOUNTING TERMS

WORKSHEET-1

CH-1: INTRODUCTION TO ACCOUNTING

Q1. Define Accounting. Explain any two objectives of accounting.

Q2. Distinguish between Book-keeping and Accounting on the basis of:

- a) Objective b) Stage c) Performance

Q3. “Accounting is an art as well as a science.” Explain this statement with examples.

Q4. Identify the internal and external users of accounting information from the following:

- a) Bank Manager
- b) Management
- c) Government
- d) Creditors
- e) Sales Manager
- f) Investors
- g) Researchers

Q5. State any three advantages of accounting.

Q6. Define Double Entry System and Single Entry System.

Q7. Mention any four advantages of Double Entry System.

Q8 Show the relationship between Book-keeping, Accounting and Accountancy by using the diagram.

Q9. What are the three branches of accounting?

Q10. Give one difference between Book-keeping, Accounting and Accountancy

WORKSHEET-2

CH-2: BASIC ACCOUNTING TERMS

Q1. Explain the following terms with one example each:

a) Asset b) Liability c) Capital

Q2. Classify the following into Assets, Liabilities, Capital, Revenue and Expense:

a) Machinery b) Bank Loan c) Commission Received d) Outstanding Salary e) Owner's Investment
f) Rent Paid

Q3. Distinguish between:

a) Capital Expenditure and Revenue Expenditure

b) Trade Discount and Cash Discount

Q4. Mr. Sharma started business with cash ₹5,00,000. He purchased goods for cash ₹1,20,000 and on credit ₹80,000 from Mohan. He sold goods costing ₹90,000 for ₹1,10,000 on credit to Raj.

Identify: a) Capital b) Assets c) Liabilities d) Revenue e) Expense

Q5. Define the following terms:

a) Drawings b) Debtor c) Creditor d) Goods e) Stock f) Voucher

Q6. Riya started a clothing business "Style Hub" on 1st April 2025. The following transactions took place in April 2025: Started business with cash ₹8,00,000 and furniture ₹2,00,000. Opened a bank account by depositing ₹3,00,000 from cash. Purchased goods for ₹2,50,000: ₹1,50,000 in cash and ₹1,00,000 on credit from Zara Ltd. Sold goods costing ₹1,20,000 for ₹1,80,000: ₹1,00,000 in cash and ₹80,000 on credit to Meena. Paid shop rent ₹15,000 by cheque. Withdrew cash ₹20,000 and goods worth ₹10,000 for personal use. Received ₹78,000 from Meena in full settlement of ₹80,000. Paid ₹98,000 to Zara Ltd. in full settlement of ₹1,00,000

Based on the above case, answer the following:

Q1. Calculate the amount of Capital introduced by Riya.

Q2. Identify the total amount of Assets at the end of April 2025. Name any assets.

Q3. Calculate the amount of Revenue and Expense for April 2025.

ECONOMICS (030)

CLASS XI

- **UNIT TEST 1 SYLLABUS: Ch 1 Introduction to statistics**

Ch 2 Sources of data

Ch 3 Introduction to Micro economics

WORKSHEET 1- CHAPTER: Introduction to Statistics

Q.1 Explain scarcity and growth definitions of statistics.

Q.2 Explain how statistics is important for Government and Business.

Q.3 Explain any 3 features of statistics.

Q.4 Explain any 3 Limitations of statistics.

WORKSHEET 2- CHAPTER: Sources of data

Q.5 State the difference between primary and secondary sources of data.

Q.6 Explain any three precautions to be taken while using secondary and primary data.

Q.7 Write a short note on Census of India.

Q.8 Give the meaning of the following:

a) Investigator

b) Enumerator

c) Respondent

d) Scarcity of resources

Q.9 Explain Enumerator method with its merits and demerits

Q.10 Explain Random sampling method its merits and demerits.

Q.11 State the difference between census and sample method.

Q.12 State the difference between indirect personal investigation and direct personal investigation.

POLITICAL SCIENCE(028)

CLASS XI

❖ UNIT TEST 1 SYLLABUS:

❖ CH-1- Constitution

❖ Ch-2- Rights

Dear Students,

As you head into your summer break, this holiday homework is designed to help you connect the theoretical concepts of our first chapter, *Constitution: Why and How?*, with the real world around you.

- **Objective:** The goal is not just to copy answers from the textbook, but to understand *why* a country needs a supreme law and *how* it shapes our daily lives.
- **Guidelines:**
 1. Complete this worksheet in your Political Science assignment register/notebook.
 2. Write neatly, use black pen for questions, and blue pen for answers.
 3. For the case-based and long-answer questions, express your own analytical thoughts rather than memorized sentences.
 4. **Deadline:** The completed worksheet must be submitted on the first day of school reopening.

Wish you a productive and refreshing summer break!

Worksheet 1

Chapter 1: Constitution: Why and How?

Section A: Multiple Choice Questions (1 Mark Each)

Q1. Which of the following is NOT a function of a constitution?

- a) To provide a set of basic rules that allow for minimal coordination among members of a society.
- b) To specify who has the power to make decisions in a society.
- c) To set some limits on what a government can impose on its citizens.
- d) To ensure that the same political party remains in power permanently.

Q2. The substantive provision of a constitution means:

- a) The process by which a constitution is formed.
- b) Giving every citizen a reason to go along with the provisions of the constitution.
- c) The power of the courts to interpret the laws.

d) The physical copy of the constitution document.

Q3. The Indian Constitution was framed by the Constituent Assembly, which was set up under the plan proposed by:

- a) The Mountbatten Plan (1947)
- b) The Cabinet Mission Plan (1946)
- c) The Cripps Mission (1942)
- d) The Simon Commission (1928)

Q4. Which crucial document, moved by Jawaharlal Nehru in 1946, defined the aims of the Constituent Assembly?

- a) The Preamble
- b) The Objective Resolution
- c) The Fundamental Rights Draft
- d) The Instrument of Instructions

Section B: Short Answer Questions (2 Marks Each)

Q5. What do you understand by the phrase "*Constitutions are not frozen documents; they are living realities*"?

Q6. Define the concept of 'Checks and Balances' in the context of the horizontal fragmentation of power in the Indian Constitution.

Q7. Why is the Indian Constitution often described as a "bag of borrowings"? Mention any two features borrowed from foreign constitutions.

Section C: Medium Answer Questions (4 Marks Each)

Q8. "A constitution must give its citizens reasons to trust it." Explain how the Indian Constitution successfully created this trust among diverse communities during its inception.

Q9. Describe how the composition of the Constituent Assembly reflected a fair representation of the Indian population despite not being elected by universal adult franchise.

Q10. Explain the three core factors that determine the absolute authority and effectiveness of any constitution.

Section D: Long Answer & Case-Based Questions (6 Marks Each)

Q11. Read the passage carefully and answer the questions that follow:

"It is the execution of a constitution that matters, more than its layout on paper. If a constitution gives a government unchecked power, it will eventually crumble

because citizens will lack the incentive to protect it. A successful constitution balances the power between the Legislature, Executive, and Judiciary so cleverly that no single institution can subvert it."

1. What happens when a constitution fails to limit government power? (2 Marks)
2. How does an intelligent system of institutional design protect a democracy? Explain with reference to India. (4 Marks)

Q12. Imagine a newly independent country with deep religious and linguistic divisions is trying to draft its new constitution. Based on your study of Chapter 1, what concrete advice would you give to their constitutional law makers regarding:

- Minimizing conflict between diverse groups.
- Ensuring the document holds long-term legitimacy.

Section E: Practical / Creative Activity (Holiday Special)

Q13. The Constitution Diary Initiative:

Find two news articles from the current summer break where the Supreme Court of India or a High Court used a constitutional provision (like Fundamental Rights) to protect a citizen or resolve a major issue.

- Cut and paste the articles in your notebook.
- Write a brief 50-word summary of each case explaining which "function" of the constitution was highlighted in that scenario.

ENGLISH CORE (301)

CLASS XI

❖ UNIT TEST 1 SYLLABUS:

Section B: Writing Skills – Advertisements

Grammar: Jumbled Words and Gap Filling

Section C: Literature – Summer of the Beautiful White Horse, Portrait of a Lady

Poems - A Photograph, Laburnum Top

❖ WORKSHEET 1- ADVERTISEMENTS

Q1. You are Krishna/Tisha, Secretary, Greenland Enterprises Ltd, Delhi-110006. Your chairman has asked you to draft an advertisement for a local daily under the classified columns for the vacant posts of one accountant and two office assistants. Draft an advertisement.

Q2. Vasant International School needs young and smart lady receptionists. Draft an advertisement to be published in the 'Situation Vacant' column of a local newspaper.

Q3. You are a Sales and Marketing Executive in need of a job in your hometown. Draft an advertisement for The National Times classified columns giving your qualification and experience.

Q4. You are a qualified English tutor in need of a job. Draft an advertisement for The Hindustan Times classified columns giving your qualification and experience.

Q5. You are Gaurav Singh of 410, sector 10, Dwarka, new Delhi. You want to sell your car. Draft an advertisement in not more than 50 words for publication in the times of India giving details of make, model, condition and giving your contact address.

Q6. You are Ashok/Ashima of Lucknow. You have got a foreign assignment and will be going abroad soon for at least 10 years. You propose to sell your flat before going. Draft an advertisement for it to be published in the classified columns of The New Times, New Delhi.

Q7. You are Shalini, Vijay Vihar, Haryana. You want to let out a house. Draft an advertisement in about 50 words to be published in the classified columns of a newspaper.

❖ WORKSHEET 2- GRAMMAR

Q8. Rearrange the following words to form meaningful sentences:

- A. Bimla/ her/ husband/ that/ told/ a coward/ he/ was
- B. he/ my letter/ received/ must have/ by now
- C. stories/ the/ wrote/ few/ that he/ romantic/ very/ were
- D. you/ have/ how much/ experience/ got?
- E. completely/ being/deaf, / can't/ anything/he/hear
- F. unexpectedly / arrived / before / the / guests / scheduled / time / the
- G. environmental / addressing / critical / a / is / priority / now / global / issue
- H. the / sparrow / from/ city / it / disappeared / house / has / seems / common/ the/ that
- I. to / the popularity / every corner / junk food /has led / of eating/joints / around/ of/the / opening
- J. the/ alone/ the/ brave/ deserve/ fair.

Q9. Rearrange the sentences to make a story.

- A. He had two sons.
- B. They were living happily.
- C. Years went by. The younger son began to get restless because he was unhappy with his lot
- D. So, the father gave him a third of his property.

- E. The young man sold his share of the property and left for another country.
- F. Once there lived a rich farmer.
- G. Soon all his money was gone, and he became a pauper.
- H. He led a luxurious life and spent a lot of money on gambling.
- I. The father tried to dissuade his son, but he wouldn't listen to his father whom he regarded as old and ignorant.
- J. He went to his father and asked for his share of the property.

Q10. Read the following passage carefully and fill in the blanks with suitable words:

In recent years, people _____ (1) increasingly aware of the importance of maintaining a balanced lifestyle. However, despite knowing the benefits of healthy habits, many individuals fail to follow them consistently. One of the major reasons behind this problem _____ (2) the fast-paced nature of modern life, which leaves people with very little time for relaxation or self-care. Students, in particular, often struggle to manage their academic responsibilities because they _____ (3) constantly under pressure to perform well in examinations and extracurricular activities. As a result, their mental and physical health _____ (4) affected adversely. Experts believe that if young people _____ (5) encouraged to maintain a proper routine, they would be able to handle stress more effectively. It is also important that schools and parents _____ (6) attention to the emotional well-being of students instead of focusing only on marks and achievements. A person who _____ (7) physically active and mentally relaxed is more likely to succeed in life than someone who ignores health completely. Therefore, it is essential that every individual _____ (8) conscious efforts to maintain a healthy balance between work and leisure.

Q11. Read the following passage carefully and fill in the blanks with suitable words:

Technology _____ (1) transformed the way people communicate and access information in the modern world. Earlier, people _____ (2) depend mainly on newspapers, letters, and radio broadcasts to remain informed about current events. Today, however, news and updates _____ (3) available instantly through smartphones and social media platforms. While these advancements _____ (4) made life more convenient, they have also created several challenges.

Many young people spend so much time online that they hardly _____ (5) any interest in outdoor activities or face-to-face conversations. Moreover, false information often _____ (6) spread rapidly on the internet, influencing public opinion in harmful ways. Experts suggest that if people _____ (7) more careful while sharing content online, the problem of misinformation could be reduced to a great extent. Therefore, it is important that technology _____ (8) used wisely and responsibly for the benefit of society as a whole.

Q12. Read the following passage carefully and fill in the blanks with suitable words:

Environmental conservation _____ (1) become one of the most important concerns of the present century. Rapid industrialisation and urban development _____ (2) caused serious damage to forests, rivers, and wildlife across the world. Although many governments have introduced laws to protect the environment, these measures alone _____ (3) not sufficient unless citizens also participate actively in conservation efforts. Every year, thousands of trees _____ (4) cut down for construction and commercial purposes, which eventually leads to climate imbalance and loss of biodiversity.

Scientists warn that if immediate action _____ (5) not taken, future generations may face severe shortages of natural resources. Schools and educational institutions should ensure that students _____ (6) taught the importance of sustainable living from an early age. Individuals can also contribute by reducing waste, saving electricity, and using public transport whenever possible. A society that _____ (7) aware of its environmental responsibilities is more likely to create a healthier and safer future. Therefore, it is necessary that every person _____ (8) conscious efforts to protect the environment.

PROJECT

Q13. Prepare the project discussed in class.

HINDI (002)

CLASS XI

❖ UNIT TEST 1 SYLLABUS:

- ❖ प्रथम यूनिट परीक्षा - अंतरा भाग -१ ईदगाह काव्य खंड- बालम आवो हमारे गेह रे तथा मुरली तऊ गोपाल की
- ❖ अंतराल -१ पाठ - हुसैन की कहानी अपनी जुबानी
- ❖ अभिव्यक्ति और माध्यम - जनसंचार माध्यम
- ❖ अपठित काव्यांश

WORKSHEET 1

ग्रीष्मावकाश गृहकार्य

निर्देश

- सभी प्रश्नों के उत्तर सुंदर एवं स्पष्ट लिखावट में लिखें।
- कार्य समय पर पूर्ण करें।
- अवकाश के बाद गृहकार्य जमा करवाना अनिवार्य है।
- वर्कशीट 1-3 का सारा कार्य अपनी कार्यपुस्तिका में कीजिए।

अंतराल भाग-1 : पाठ ईदगाह

प्रश्न 1. पाठ के प्रमुख पात्रों का चरित्र-चित्रण कीजिए।

प्रश्न 2. पाठ का उद्देश्य अपने शब्दों में लिखिए।

प्रश्न 3. पाठ में प्रस्तुत सामाजिक संदेश को स्पष्ट कीजिए।

प्रश्न 4. यदि आप कहानी के मुख्य पात्र होते, तो क्या निर्णय लेते और क्यों?

Activity:

पाठ का एक दृश्य चित्र सहित A4 शीट पर प्रस्तुत कीजिए।

WORKSHEET 2

कविता : "इन दोहों..." / "खेलन में..."

प्रश्न 1. कवि का परिचय लिखिए।

प्रश्न 2. कविता का भावार्थ अपने शब्दों में लिखिए।

प्रश्न 3. कविता में प्रयुक्त भाषा-शैली की विशेषताएँ बताइए।

प्रश्न 4. कविता से प्राप्त संदेश लिखिए।

Creative Task:

कविता की किसी पंक्ति पर आधारित पोस्टर / चित्र बनाइए।

WORKSHEET 3

पाठ 1: जनसंचार माध्यम (मुख्य बिंदु)

- संचार मानव जीवन की अनिवार्यता है।
- जनसंचार माध्यम (समाचारपत्र, रेडियो, टीवी, इंटरनेट) समाज को सूचना, शिक्षा और मनोरंजन प्रदान करते हैं।
- लोकमाध्यम (रामलीला, नौटंकी, कठपुतली, यक्षगान आदि) भारतीय संस्कृति का हिस्सा हैं।
- जनसंचार के सकारात्मक और नकारात्मक प्रभाव दोनों हैं।

1. **लोकमाध्यमों की भूमिका:** आपके क्षेत्र में कौन-सा लोकमाध्यम प्रचलित है? उसकी प्रस्तुति की विशेषताओं का वर्णन कीजिए।
2. **समाचारपत्र और चुनौतियाँ:** आज़ादी के बाद भारत की चुनौतियों के प्रति समाचारपत्र कितने संवेदनशील रहे हैं? उदाहरण दीजिए।
3. **जनसंचार का प्रभाव:** जनसंचार माध्यम समाज पर सकारात्मक और नकारात्मक दोनों तरह से कैसे असर डालते हैं?
4. **संचार और तकनीक:** इंटरनेट और सोशल मीडिया ने संचार के स्वरूप को किस तरह बदल दिया है?
5. **रचनात्मक अभ्यास:** "संचार जीवन की निशानी है" — इस कथन पर आधारित एक लघु निबंध या कविता लिखिए।

सुझाव-

- उत्तर लिखते समय **स्थानीय उदाहरण** (जैसे दिल्ली में रामलीला, नौटंकी आदि) शामिल करें।
- **समकालीन संदर्भ** (जैसे सोशल मीडिया, टीवी डिबेट्स, OTT प्लेटफॉर्म) जोड़ें।
- जहाँ संभव हो, **तुलना** करें — पुराने लोकमाध्यम बनाम आधुनिक डिजिटल माध्यम।

WORKSHEET 4

परियोजना कार्य

निम्नलिखित में से कोई दो प्रोजेक्ट तैयार कीजिए –

- 1.हिंदी साहित्य में कबीरदास / रहीम के दोहों का महत्व।
- 2.भारतीय संस्कृति और लोक खेलों का महत्व।
- 3.आधुनिक जीवन में नैतिक मूल्यों की आवश्यकता।
- 4.हिंदी भाषा के विकास में साहित्य का योगदान।

निर्देश :

- सम्पूर्ण कार्य साफ एवं सुंदर हस्तलेख में कीजिए।
- प्रत्येक कार्य रंगीन तथा रचनात्मक तरीके से प्रस्तुत कीजिए।
- चित्र, बॉर्डर एवं सजावट का उचित प्रयोग कीजिए।
- सम्पूर्ण कार्य A4 शीट/ फाइल में पूर्ण कीजिए।
- प्रोजेक्ट कार्य कम से कम 8-10 पृष्ठों का होना चाहिए।
- कार्य समय पर पूर्ण करके विद्यालय खुलने पर जमा कराइए।

PUNJABI (104)

CLASS XI

ਪਿਆਰੇ ਵਿਦਿਆਰਥੀਓ,

ਗਰਮੀਆਂ ਦੀਆਂ ਛੁੱਟੀਆਂ ਆਰਾਮ ਕਰਨ, ਨਵੀਆਂ ਗੱਲਾਂ ਸਿੱਖਣ ਅਤੇ ਆਪਣੀ ਰਚਨਾਤਮਕਤਾ ਨੂੰ ਨਿਖਾਰਣ ਦਾ ਸੁੰਦਰ ਸਮਾਂ ਹੁੰਦੀਆਂ ਹਨ। ਤੁਹਾਡਾ ਹਾਲੀਡੇ ਹੋਮਵਰਕ ਇਸ ਤਰ੍ਹਾਂ ਤਿਆਰ ਕੀਤਾ ਗਿਆ ਹੈ ਕਿ ਤੁਸੀਂ ਆਪਣੀ ਪੜ੍ਹਾਈ ਦੀ ਦੁਹਰਾਈ ਵੀ ਕਰ ਸਕੋ ਅਤੇ ਨਵੀਆਂ ਚੀਜ਼ਾਂ ਵੀ ਸਿੱਖ ਸਕੋ। ਆਪਣਾ ਕੰਮ ਸਾਫ਼-ਸੁਥਰੇ ਅਤੇ ਸਮੇਂ ਸਿਰ ਪੂਰਾ ਕਰੋ। ਛੁੱਟੀਆਂ ਦੌਰਾਨ ਕਿਤਾਬਾਂ ਪੜ੍ਹੋ, ਮਾਪਿਆਂ ਦੀ ਸਹਾਇਤਾ ਕਰੋ ਅਤੇ ਪਰਿਵਾਰ ਨਾਲ ਚੰਗਾ ਸਮਾਂ ਬਿਤਾਓ।

“ਸਿੱਖਣਾ ਕਦੇ ਨਹੀਂ ਰੁੱਕਦਾ – ਛੁੱਟੀਆਂ ਵੀ ਗਿਆਨ ਅਤੇ ਰਚਨਾਤਮਕਤਾ ਦੀ ਸੋਹਣੀ ਯਾਤਰਾ ਬਣ ਸਕਦੀਆਂ ਹਨ।”

ਤੁਹਾਨੂੰ ਖੁਸ਼ਹਾਲ, ਸੁਰੱਖਿਅਤ ਅਤੇ ਲਾਭਦਾਇਕ ਛੁੱਟੀਆਂ ਦੀਆਂ ਸ਼ੁਭਕਾਮਨਾਵਾਂ। 

❖ UNIT TEST 1 SYLLABUS: ਪੱਤਰ , ਮੁਹਾਵਰੇ , ਦਫਤਰੀ ਸ਼ਬਦਾਵਲੀ , ਬੀਮਾ ਸੇਵਾਵਾਂ ਨਾਲ ਸੰਬੰਧਿਤ ਵਾਕ , ਸੁਹਾਗ - ਚੜ੍ਹ ਚੁਬਾਰੇ ਸੁੱਤਿਆ , ਬੋਟੀ ਚੰਨਣ ਦੇ ਉਹਲੇ , ਦੇਈਂ ਦੇਈਂ ਵੇ ਬਾਬਲਾ

ਨੋਟ - ਹੇਠ ਦਿੱਤਾ ਗਿਆ ਕੰਮ ਜਮਾਤ ਦੀ ਕਾਪੀ ਵਿੱਚ ਕੀਤਾ ਜਾਵੇ

ਪ੍ਰਸ਼ਨ - 1 ਹੇਠ ਦਿੱਤੇ ਵਿਸ਼ਿਆਂ ਵਿੱਚੋਂ ਕੋਈ ਦੋ ਲੇਖ ਲਿਖੋ -

ਪ੍ਰਦੂਸ਼ਣ ਦੀ ਸਮੱਸਿਆ , ਬੱਚਿਆਂ ਦੇ ਮਾਤਾ ਪਿਤਾ ਪ੍ਰਤੀ ਫਰਜ਼ , ਆਨ - ਲਾਈਨ ਖਰੀਦਾਰੀ

ਪ੍ਰਸ਼ਨ - 2 ਕਿਸੇ ਅਖਬਾਰ ਦੇ ਸੰਪਾਦਕ ਨੂੰ ਪੱਤਰ ਲਿਖੋ -

ਪਿੰਡਾਂ ਦੇ ਸਰਕਾਰੀ ਹਸਪਤਾਲਾਂ ਦੀ ਹਾਲਤ ਬਾਰੇ |

ਆਪਣੇ ਸਕੂਲ ਵਿੱਚ ਹੋਏ ਖਾਨ ਸਾਹਬ ਦੇ ਪ੍ਰੋਗਰਾਮ “ ਸੱਜਦਾ “ ਬਾਰੇ

ਪ੍ਰਸ਼ਨ - 3 ਸੁਹਾਗ ‘ ਸਦਾ ਚਿੜੀਆਂ ਦਾ ਚੰਬਾ ‘ ਯੂ - ਟਿਊਬ ਦੀ ਸਹਾਇਤਾ ਨਾਲ ਸੁਣੋ ਅਤੇ ਜਮਾਤ ਮੁਕਾਬਲੇ ਲਈ ਯਾਦ ਕਰੋ |

ਪ੍ਰਸ਼ਨ - 4 ਪਾਠ ਪੁਸਤਕ ਵਿੱਚ ਦਰਜ ਕਹਾਣੀ ‘ ਪੂਰਨ ਭਗਤ ਪੜ੍ਹੋ ਅਤੇ ਉਸ ਦਾ ਸਾਰ ਆਪਣੇ ਸ਼ਬਦਾਂ ਵਿੱਚ ਲਿਖੋ |

ਪ੍ਰਸ਼ਨ - 5 ਕੋਈ ਦੱਸ ਬੁਝਾਰਤਾਂ ਆਪਣੇ ਘਰ ਦੇ ਬਜ਼ੁਰਗਾਂ ਦੀ ਸਹਾਇਤਾ ਨਾਲ ਲੱਭ ਕੇ ਕਾਪੀ ਵਿੱਚ ਲਿਖੋ | (ਪਾਠ ਪੁਸਤਕ ਵਿੱਚ ਦਿੱਤੀਆਂ ਬੁਝਾਰਤਾਂ ਤੋਂ ਇਲਾਵਾ)

ਪ੍ਰਸ਼ਨ - 6 ਪੰਜਾਬ ਦੇ ਅਮੀਰ ਸਭਿਆਚਾਰ ਬਾਰੇ ਇੱਕ ਪੈਰਾ ਲਿਖੋ |

ਯੂਨਿਟ ਟੈਸਟ ਦਾ ਦਿੱਤਾ ਗਿਆ ਸਾਰਾ ਸਿਲੇਬਸ ਯਾਦ ਕਰੋ |

PSYCHOLOGY

CLASS XI

- ❖ **UNIT TEST 1 SYLLABUS: Chap 1: What is Psychology
Chap 2: Methods of Enquiry in Psychology**

- ❖ **WORKSHEET 1: Chap 1: What is Psychology**

Case 1

Riya always says that “Psychology means reading people’s minds.” After studying psychology in school, she realized that psychologists actually use scientific methods, observation, and research to understand behavior.

Questions:

- 1. What popular notion about psychology did Riya have?**
- 2. Why is Psychology considered a scientific discipline?**
- 3. Name one scientific method used in Psychology.**

Case 2

A child starts studying regularly because the parents praise and reward the child whenever homework is completed on time.

Questions:

- 1. Which school of thought explains this behavior?**
- 2. Name one psychologist related to this approach.**
- 3. What principle is being used here?**

Case 3

A psychologist studies how stress during exams causes headaches, stomach pain, and sleep problems in students.

Questions:

- 1. Which branch of Psychology is involved here?**
- 2. What relationship is being studied?**
- 3. Mention one psychological factor affecting health in this case.**

Case 4

A company hires a psychologist to improve communication among employees, reduce stress, and increase motivation at the workplace.

Questions:

- 1. Which branch of Psychology is being applied?**
- 2. Mention one role of psychologists in industries.**
- 3. How can Psychology improve workplace performance?**

Case 5

A football player practices visualization and confidence-building techniques before an important match.

Questions:

- 1. Which branch of Psychology is being used?**
- 2. What is the main aim of this branch?**
- 3. Name one psychological skill important in sports.**

WORKSHEET 2: Chap 2: Methods of Enquiry in Psychology

Instructions: For each of the following scenarios, formulate a clear hypothesis. Then, identify the Independent Variable (IV) and the Dependent Variable (DV).

- 1. A psychologist wants to test if listening to classical music during study improves memory performance in students.**
- 2. A researcher is studying whether the amount of sleep affects problem-solving ability in teenagers.**
- 3. An experiment is conducted to see if giving rewards increases the time children spend on homework.**
- 4. A psychologist wants to study if drinking coffee before a test improves performance.**
- 5. Does background noise affect concentration levels in students during a reading task?**
- 6. A teacher wants to find out whether visual aids help students learn faster compared to verbal instructions.**
- 7. A researcher investigates whether physical exercise improves mood in college students.**
- 8. An experiment is designed to see if students who meditate daily show less exam anxiety than those who don't.**
- 9. A study is being conducted to test whether consuming sugar before a math test affects accuracy in solving problems.**

10. A psychologist wants to see if group study leads to better academic scores than individual study.

Project – Undertake a project/ small study by using the different methods of enquiry like, observation, survey, interview, questionnaire related to any of the following topics:

1. Stress and study habits in students
2. Peer pressure and decision-making among teens
3. Awareness about gender equality in school
4. Bullying experiences in school environment
5. Career preferences among boys vs. girls
6. Screen time and its impact on sleep
7. Role of parents in managing adolescent stress
8. Influence of influencers: How teens are affected by online content
9. Awareness about mental health in your school
10. The Impact of Social Media on Teenagers' Mental Health

INFORMATICS PRACTICES (065)

CLASS XI

- ❖ **UNIT TEST 1 SYLLABUS:**
Basic Python till Conditional Construct(If Else).

Holidays Home Work

Kindly note that the following questions need to be created in Python software. In the document file, the questions should be properly written along with screenshots of the Python program, answers, and outputs. The complete MS Word file needs to be sent to mahalrinky@gmail.com.

1. Write a program to enter student name, class, section, and admission number. Display the details in proper format.

2. Write a program to input length and breadth of a rectangle and calculate:

- Area
- Perimeter

Use suitable arithmetic operators.

3. A customer buys 3 items. Input the price of each item and calculate:

- Total bill amount
- Average price of items

4. Write a program to convert temperature from Celsius to Fahrenheit using the formula:

$$F = 5/9 * C + 32$$

5. Write a Python program to calculate Simple Interest by taking Principal, Rate, and Time as input.

6. Input marks of 5 subjects and calculate:

- Total marks
- Percentage

7. Write a program to convert Indian Rupees into US Dollars.

Assume:

1 Dollar = 83 Rupees.

8. Input distance in kilometres and convert it into meters and centimetres.

10. Calculate Employee Salary Slip

Input:

- Employee name
- Basic salary

Calculate:

- HRA = 10% of salary
- DA = 5% of salary
- Total Salary

11. Write a program to calculate the area and circumference of a circle.

12. Write a program to swap two numbers using a third variable.

13. Input total minutes and convert them into hours and remaining minutes.

14. Input number of units consumed and calculate total bill amount if cost per unit is ₹6.

15. Write a program to calculate BMI

16. Cricket Score Analysis

Input runs scored in 5 matches and calculate:

- Total runs
- Average runs

17. Input book price and calculate final amount after 10% discount.

18. Write a program to calculate volume of cuboid using length, breadth, and height.

19. Digital Clock Conversion

Input total seconds and convert them into minutes and seconds.

20. Travel Expense Calculator

Input:

- Distance travelled
- Fuel efficiency (km/litre)
- Petrol price per litre

Calculate total fuel cost of the trip.

Commercial Art (052)

Class XI

Session 2026–27

Portfolio Submission Date: 6TH July 2026

Sheet Size: A2 White Sheets

Total Sheets to be Submitted: 15 Sheets

Instructions for Students

- **All work must be done neatly on A2 size white sheets.**
- **Use proper composition, creativity, shading, and color combinations.**
- **Mention your Name, Class, Section, and Roll Number on the back side of every sheet.**
- ❖ Maintain a separate portfolio folder for submission.
- ❖ Use suitable mediums such as pencil colors, watercolors, poster colors, oil pastels, charcoal, or sketch pens wherever required.
- ❖ Black & White work should be properly shaded and neatly finished.

Portfolio Work Distribution (15 Sheets)

1. Still Life – 3 Sheets

(Pencil Shading Colourful Composition)

Create any three still life compositions using objects such as:

Fruits and bottles

Flower vase

Kitchen utensils

Books and lamp

Earthen pots

Medium:

2 sheets in pencil shading, 1

sheet in color

2. Landscape Painting – 2 Sheets

(Colourful)

Create two colorful landscape paintings based on:

Sunrise or sunset

Nature scenery

Mountains and river Village

landscape

3. Folk Art – 2 Sheets

(Traditional Colourful Art) Create

any two folk art paintings:

Madhubani Art

Warli Art

Gond Art

Kalamkari

Pattachitra

4. Illustration – 1 Sheet

Create one creative illustration on any one topic:

Festival celebration, Environment awareness, School

life Imagination scene

5. Figure Drawing – 3 Sheets

(Black & White)

Create human figure compositions on the following themes: Market

Scene ,Family Scene, Sports Activity

Medium:

Pencil / Charcoal / Black ink only

6. Outdoor s Daily Life Scene – 2 Sheets

Draw and color any two scenes from the following:

Children playing in park

Football match

Village scene Tea

stall

Bus stand

7. Poster Making – 2 Sheets

Create two attractive posters with slogans and proper color combinations on the following themes:

Save Water

Save Earth

Say No to Plastic

Save Electricity

Submission Guidelines

Portfolio must contain all 15 sheets properly arranged.

Incomplete work will not be accepted.

Creativity, neatness, coloring, originality, and presentation will be considered for assessment.

- **Submit the complete portfolio by 6TH July 2026 without fail.**
- **Holiday Homework should be prepared neatly and in proper format.**
- **Use proper labeling and presentation.**
- **Headings should be bold and clearly written.**
- **Maintain cleanliness and creativity in all artwork.**

Thank You

HINDUSTANI MUSIC VOCAL (034)

CLASS XI

- ❖ **UNIT TEST 1 SYLLABUS: SHORT NOTES- NADA, JATI, SWAR, LAY**
 - RAGA- VARINDAWANI SARANG
 - TAAL- DADRA
 - DIFFERENCE BETWEEN RAAG AND THAAT

○

- ❖ **WORKSHEET : RAGA, TAAL & THAAT**

Q1. STATE THE DIFFERENCE BETWEEN RAAG AND THAAT.

Q2. WRITE NOTATION OF RAGA VARINDAWANI SRANG.

Q3. WRITE THAH, DUGUN, TIGUN AND CHAUGUN OF DADRA TAAL.

- ❖ **PROJECT WORK :**

MAKE A WELL LABELLED STRUCTURE OF TANPURA ON A4 SIZE SHEET.

Physical Education (Code: 048)

CLASS XI

❖ UNIT TEST 1 SYLLABUS : CHANGING TRENDS AND CAREER IN PHYSICAL EDUCATION, OLYMPIC VALUE EDUCATION

QUESTION BANK

SECTION A: VERY SHORT ANSWER TYPE QUESTIONS (1 & 2 MARKS)

Q1. Define the term 'Physical Education' according to H. Clark or Central Advisory Board of Physical Education and Recreation.

Q2. What is the primary objective of 'Social Development' through Physical Education?

Q3. State any two traditional sports of India that have witnessed an institutional revival in recent decades.

Q4. Name any two performance-analysis software or technological wearable tools widely utilized in modern sports coaching.

Q5. Differentiate between the literal meaning of Physical Education and its modern comprehensive concept.

Q6. Enlist four distinct career options available in the communication and print media sector specifically within Physical Education.

Q7. Briefly outline the role and mandate of the Sports Authority of India (SAI) established in 1984.

SECTION B: SHORT ANSWER TYPE QUESTIONS (3 MARKS)

Q8. Elaborate on the 'Neuro-Muscular Coordination' objective of Physical Education. How does regular physical training enhance this mechanism?

Q9. "The Khelo India Programme has transformed the grassroots sports ecosystem in India." Justify this statement by highlighting three major verticals or components of the scheme.

Q10. Discuss the emerging avenues in teaching and coaching as lucrative career choices in the field of contemporary Physical Education.

Q11. Explain how technological advancements, such as Video Assistant Referee (VAR) and Smart Ball technologies, have modified changing trends in competitive sports officiating.

SECTION C: LONG ANSWER TYPE QUESTIONS (5 MARKS)

Q12. Define Physical Education and explain its core objectives in comprehensive detail. Present your answer using a structural flowchart mapping all five primary domains of development.

Q13. Provide an extensive classification of the various career avenues in Physical Education under the following domains: (a) Teaching, (b) Coaching/Training, (c) Health and Fitness, and (d) Sports Journalism/Media.

Q14. Trace the historical evolution, structural objectives, and systemic operational framework of the 'Khelo India - National Programme for Development of Sports'. Discuss its measurable impacts on identifying sub-urban talent.

Q15. Who is formally recognized as the founder of the Modern Olympic Games? In which year and location were the first Modern Olympic Games celebrated?

Q16. State the official Latin motto of the Olympic Games, including its fourth newer word added recently, and provide its exact English translation.

Q17. What do the five interlocking rings on the Olympic flag symbolize, and what specific geographic elements do they represent?

Q18. Define the term 'Olympic Truce' (Ekecheiria) and state its core socio-political purpose during the ancient games.

Q19. Mention any four major criteria or strict rules that ancient Greek athletes had to fulfill to participate in the Ancient Olympic Games.

Q20. Differentiate between the primary functions and roles of the International Olympic Committee (IOC) and the Indian Olympic Association (IOA).

Q21. Briefly define the three core values promoted by the Olympic Movement: Excellence, Respect, and Friendship.

SECTION B: SHORT ANSWER TYPE QUESTIONS (3 MARKS)

Q22. Explain the structural composition and execution of the Olympic Oath during the Opening Ceremony. Who delivers the oath on behalf of all stakeholders?

Q23. Describe the history, ritual significance, and symbolic route mapping of the Olympic Flame/Torch relay from Olympia to the host city.

Q24. Highlight the key organizational responsibilities, constitution, and objectives of the Indian Olympic Association (IOA) in managing national athletic representation.

Q25. Write a short note on the Paralympic Games, detailing their developmental origin, governance by the IPC, and the symbolic 'Agitos' emblem.

SECTION C: LONG ANSWER TYPE QUESTIONS (5 MARKS)

Q26. Provide a detailed comparative account of the Ancient and Modern Olympic Games. Your comparison must distinctly evaluate parameters including eligibility criteria, religious nature, awards/rewards, and participation of women.

Q27. Elaborate on 'Olympic Value Education'. Discuss comprehensively how values like Fair Play, Solidarity, Joy of Effort, and Freedom from Discrimination can be systematically inculcated in school students through physical education curricula.

Q28. Discuss the organizational framework of the International Olympic Committee (IOC). Detail its structural governing bodies (The Session, Executive Board, and President), its foundational headquarters location, and its absolute powers concerning host city selection and anti-doping mandate.